

Your Trusted Partner



FRANKEL DISTRIBUTION

 67 Charles Regnaud Street, Eau Coulee

 5 954 0388 5770 5301 5917 5701

 contact@frankeldistribution.com

 www.frankeldistribution.com



OUR BRANDS



Company Background

Frankel Distribution Ltd was created with the ultimate goal of providing high quality protective equipment at an affordable price to the local and regional market.

Our broad portfolio of world class safety equipment have been carefully selected for optimum customer protection and satisfaction. Quality, comfort and value for money are key characteristics that make our products unique.

We are dedicated to our customers safety and all our products abide by the European Conformity (CE) and BSI standards.

Our Vision

To become a leading company in providing quality protective equipment to both local and regional market.

Our Mission

Securing your greatest asset: " **Your People**".



www.frankeldistribution.com



5770 5301 / 5917 5701

FOOTWEAR

YOUR SAFETY FIRST...



LEATHER : Water Resistant Breathable Genuine Leather With Cool Comfort Technique.
SOLE : Heavy Duty Double Density Black PU Sole With Broad Steel Toe & Flexible Steel Plate, Oil and Acid Resistant, Anti-Slip, Energy Absorbing Heels, Abrasion and Penetration Resistant.

INSOLE: Padded Insole



LEATHER : Resistant Breathable Genuine Leather With Cool Comfort Technique
 PU injected (composite)-
 NO STEEL TOE & PLATE
 Low cut, Acid Resistant, Anti-Slip, Energy Absorbing Heels, Abrasion and Penetration Resistant



The JUMPER S3 SRC safety boots are steel-capped with steel midsole and energy absorbing heel for protective wearing. The boots are made of split leather with polyester absorbent lining and are water, oil and slip resistant.



LEATHER : Breathable Genuine Leather With Cool Comfort Technique.
SOLE : Heavy Duty Double Density Black/Orange PU Sole With Broad Steel Toe & Flexible Steel Plate.

INSOLE: Padded EVA



LEATHER : Water Resistant Breathable Genuine Leather With Cool Comfort Technique.
SOLE : Heavy Duty Double Density Black PU Sole With Broad Steel Toe & Flexible Steel Plate, Oil and Acid Resistant, Anti-Slip, Energy Absorbing Heels, Abrasion and Penetration Resistant.

INSOLE: Padded Insole



LEATHER : Water Resistant Breathable Genuine Leather With Cool Comfort Technique.
SOLE: Without toe and plate,
INSOLE: Moulded EVA



GENUINE LEATHER:
 Low ankle
SOLE: Without steel toe and plate



KITCHEN CLOG
GENUINE LEATHER:
 Water resistant upper, anti fungus, anti slip, steel toe, anti bacterial, energy absorbing heels, acid resistant and padded insole with mesh lining



GUMBOOT/RAINBOOT
MATERIAL: High Quality PVC.
SOLE: Cleated PVC Sole With Steel Plate, Steel Toe, U- Shaped Anti Fatigue and Energy Absorbing Heel, Oil - Acid Resistant, Anti-Slip



GUMBOOT/RAINBOOT
MATERIAL: High Quality PVC.
SOLE: Cleated PVC Sole With Steel Plate, Steel Toe, U- Shaped Anti Fatigue and Energy Absorbing Heel, Oil - Acid Resistant, Anti-Slip



www.frankeldistribution.com



5770 5301 / 5917 5701

BODY WEAR

YOUR SAFETY FIRST...



REFLECTIVE FABRIC VEST

FEATURES : Polyester Knitted Fluorescent Fabric With 2 Vertical & 2 Horizontal Grey Reflective Stripes With Velcro Closure.

COLOR: Yellow / Orange

SIZE: Free Size



WINTER JACKET

FEATURES : 100% Polyester With Polyurethane Coating, Water Resistant Shell With Multiple Interior And Exterior Pockets With Flap And Velcro Closures, Zipper Front Closure With a Snap Storm Flap. Tuck away Hood In Collar With Drawstring And Inner Sleeve Cuffs.

Retro Reflective Stripes : 2 Vertical, 2 Horizontal & 2 Stripes On Each Sleeves.

COLOR : Green



100% COTTON COVERALL WITH REFLECTIVE STRIPES

FEATURES : 2 Stripes On Shoulders, 2 Stripes On Sleeves & 2 Stripes On Legs, Adjustable Sleeve Edges With Velcro Straps, 2 Way Heavy Duty Zipper With Metal Snap, 3 Chest Pockets With Velcro Flap & 1 Pen Pocket On Left Arm, 2 Front Swing Pockets & 2 Back Pockets In Trousers, 1 Extra Trousers Pocket At The Right Lower, elasticized Waist Band At Back, Double Stitched Seams With Heavy Duty Colourfast Thread Reinforced Sanforized And Mercerized

FABRIC WEIGHT: 270 Gsm



FIRE RETARDANT COVERALL 100% COTTON

FEATURES : Adjustable Sleeve Edges With Button Wrist Closures, 2 Way Heavy Duty Metal Zipper, 2 Chest Pockets With Zipper & 1 Pen Pocket On Left Arm, Concealed Slits In Front Pockets, 1 Back Pocket In Trousers And 1 Tool Pocket At The Right Lower, 2 Elasticized Waist Band At Sides, Double Stitched Seams / Sanforized

FABRIC WEIGHT: 320 Gsm



DISPOSABLE COVERALL

40 GSM

FEATURES : 40 Gsm, Non Woven Breathable Polypropylene Fabric, With elasticated Hood, Cuffs and Ankles, Storm flap over zip.

APPLICATIONS : Light Duty Cleaning, Warehousing, Janitorial, Domestic DIY, General Maintenance etc.

COLOR : White



100% TWILL PANT & SHIRT

SHIRT : 2 Chest Pockets With Button Flap & 2 Lower Swing Pockets

PANT : 2 Swing Pockets, 2 Side Pockets With Velcro Flap And 2 Back Pockets With Flap And Elasticized Waist Band At The Back For Improved Comfort.

Sanforized, Mercerized & Pre-Shrunk

FABRIC WEIGHT: 190 G

COLOR : Navy Blue



www.frankeldistribution.com



5770 5301 / 5917 5701

SAFETY ESSENTIALS

YOUR SAFETY FIRST...



SAFETY GOGGLE

LENS: CLEAR, Impact Resistant Polycarbonate Lens With 99.9 % UV Protection. **COATING :** Anti-Scratch.
FRAME : PVC Frame With Direct Ventilation and Black Color Elastic Head Strap.
FEATURES : Protects From Coarse Dust And Can Be



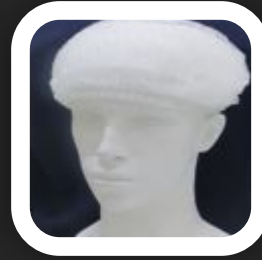
SAFETY SPECTACLE

LENS : DARK, Impact Resistant Polycarbonate Lens With 99.9 % UV Protection.
COATING : Anti-Scratch.
FRAME : Black Half Frame.
TEMPLE : Black Color Comfortable Temple With Soft Blue Tips.
FEATURES : Stylish Mod-



SAFETY HELMET WITH PINLOCK SUSPENSION

FEATURES : 6 Points Pin Lock Textile Suspension With Foam Sweat Band, Short Brim For Broader Field Of View, Customized Logo Options, Comfortable, Tuff And Light Weight.
SIZE : 51 cm - 62 cm
MATERIAL : High Density Polyethylene



CLIP CAP/DISPOSABLE CAP

FEATURES : Germ Free and Fine Finish, Unisex, Prevents the Escape of Hair and Dandruff, Non-woven Material, Broad Stretch Band Simplifies Donning and Doffing, Provides Improved Wearing Comfort, Repels Fluids from Outside, Available in Universal Sizes, Single Elastic 18"
MATERIAL : Non-Woven Spun-Bonded Polypropyl-



CUP SHAPED PARTICULATE RESPIRATOR

FEATURES : Adjustable Nose Clip, Dual Braided Elastic Head Strap, Soft Nose Foam. Compatible With a Variety Of Protective Eyewear And Hearing Protection.
APPLICATION : Assembly, Cleaning, Demolition, Facility Maintenance, Grinding, Machine Operations, Sanding etc. Respiratory Protection Against Certain Non-Oil



LATEX COATED GLOVES

GREEN Color Half Latex Coated Crinkle Finish Gloves On Yellow Knitted Shell
FEATURES : Flexible And Comfortable, Good Grip With Breathability, Anti-Acid, Anti-Alkali, Anti-Slip And Penetration Resistance. Suitable For Mechanical And Low Temperature Environments.
SIZE : 10



NITRILE COATED GLOVES

Polyester Liner, Grey Nitrile Coated Gloves With Smooth Foam Finish
FEATURES : Flexible And Comfortable, Excellent Breathability, Lightweight, Good Grip, Abrasion Resistant, Knitted Wrist, Oil Proof, Anti-Acid And Anti-Alkali.
SIZE : 10



INDUSTRIAL GLOVES

Black Color Latex Rubber Industrial Gloves With Orange Lining
FEATURES : Made Of Natural Latex, Abrasion Resistant, Non-Toxic, Roll-Edged Cuff, Light Chemical Resistant. Suitable In General Maintenance, Janitorial, Cleaning, General Industrial etc.
WEIGHT : 140 Grams **SIZE :** 14 Inch



LEATHER WORKING GLOVES

Yellow Cow Hide Split, Patch Palm Leather Rigger Glove
FEATURES : Reinforced Palm, Thumb & Index Finger, Safety Cuff For Extra Protection With Yellow Back.
Ideal For Metal Working, Fabrication, Construction, Farming And Other Heavy Industrial Work Applications.



WELDING GLOVES WITH PIPING - 16 INCH

FEATURES : Premium Select Leather/ Heat Resisting, Sparks, Slag and Cuts, All Seams are Double-Lock Stitched and Sewn, Wing Thumb, Ideal for Welding, Heat Applications and all Other General Purpose Applications Requiring Heat, Flame or Spark Protection.
COLOR : RED



www.frankeldistribution.com



5770 5301 / 5917 5701

SAFETY ESSENTIALS

YOUR SAFETY FIRST...



FIRE BLANKET

FEATURES : Made Of 100% Fibre Glass Fabric, Quick Release Pull Tapes, Wall-Mount Design, Easy To Install And To Use In An Emergency.

DIMENSION : 1.2M X 1.2M (4 Ft X 4 Ft)

PACKING : Individually Packed In a Storage Nylon pouch.



MULTI POSITION EAR MUFF

FEATURES: Wide Soft Cushion, Easily Disassembled For Cleaning, No Direct Air Leaks Into The Ear Cup For Higher Attenuation, Dielectric Material, Designed To Be Compatible With Other PPE.

NRR 22dB & SNR 27 Db-
Black colour



UNIVERSAL HELMET MOUNT EAR MUFF

FEATURES : Universal Mount Attachment That Fits Most Hard Hats, Ear-cup Pivot Points Tilts For Optimum Comfort And Efficiency, Soft Foam Filled Cushions For All Day Comfort, Internal Acoustic Foam Pad, Self Aligned High Impact Moulded Ear cups.



LEATHER EXAMINATION GLOVES

FEATURES : Excellent for general protective purpose: hospitals, food handlers, beauty salon etc

Powdered and
non powdered
Disposable



FACE MASK-3 PLY SURGICAL

FEATURES : Excellent for general protective purpose, food, beauty salon etc

3-Ply, Max Comfort.
Non woven
Disposable



FRANKEL
DISTRIBUTION LTD

📍 67 Charles Regnaud Street, Eau Coulee

☎ 5 954 0388 5770 5301 5917 5701

✉ contact@frankeldistribution.com

🌐 www.frankeldistribution.com

Your Trusted Partner...